

EUROPEAN ASSOCIATION OF
PSYCHOLOGY AND LAW (EAPL)



Virtual EUROPEAN ASSOCIATION OF PSYCHOLOGY AND LAW



VULNERABILITY IN FORENSIC SETTINGS

17/08/2022 - 3.00pm to 6.30pm

TABLE OF CONTENTS

03

TIMETABLE

04

KEYNOTES

07

STUDENT/ EARLY-
CAREER
PRESENTATIONS

10

ROUNDTABLE
COMMENTATORS



TIMETABLE

The event will be held, via Zoom, on **Wednesday 17.8.2022** from **3.00pm to 6.30pm (CEST)**. There will be three keynotes, followed by five student / early-career presentations. A round table discussion will then be held to further consider and discuss vulnerability in forensic settings.

The speakers and timetable for this event are as follows:

3.00pm-4.10pm: Opening & Keynotes (Chair: Prof. Dr. Renate Volbert)

- Dr Roxanna Dehaghani
- Dr Lore Mergaerts
- Dr Julie Gawrylowicz

Comfort break: 10 minutes

4.20pm-5.35pm: Student/Early-Career Presentations

- Linnea Koponen
- Charlotte Löfgren
- Chloe Macdonald
- Elsa Gewehr
- Anett Tamm

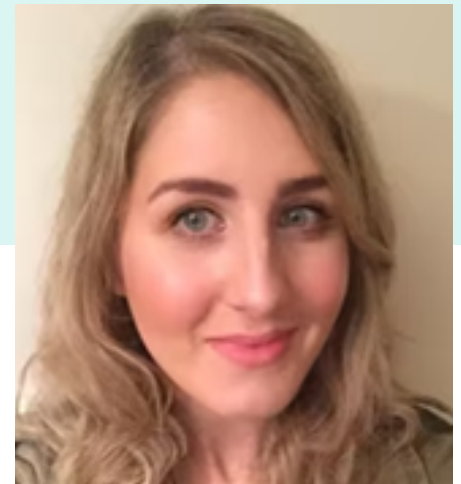
Comfort break: 10 minutes

5.45pm-6.30pm: Roundtable discussion

- Prof. Penny Cooper
- Dr Michelle Mattison

KEYNOTES

Dr Roxanna Dehaghani



Title of presentation: Vulnerability in Police Custody

Dr Roxanna Dehaghani is a Senior Lecturer in Law at Cardiff University. She is an expert on the vulnerable accused, specifically vulnerable suspects and the appropriate adult safeguard, and criminal legal aid/defence. She is the author of 'Vulnerability in Police Custody' (Routledge, 2019), co-author of 'Experiences of Criminal Justice' (Bristol University Press, 2022), and lead editor on 'Vulnerability, the Accused and the Criminal Justice System' (Routledge, 2023). She works closely with policymakers, practitioners and those with lived experience to improve law, policy and practice as it relates to vulnerable suspects. She serves on the Editorial Boards of the Howard Journal of Crime and Justice and the Journal of Adult Protection and is soon to start work on a European Research Council funded project on the regulation of criminal justice detention.

Dr Dehaghani will discuss the vulnerability provisions within the Police and Criminal Evidence Act 1984. She will examine how vulnerability (in respect of vulnerable adult suspects) was, is, and could - or should - be defined. She will also reflect on her role on the Home Office Working Group on Vulnerable Adults, the changes made to law as a result of the Working Group and public consultation, and the challenges encountered when securing (or seeking to secure) legislative change.

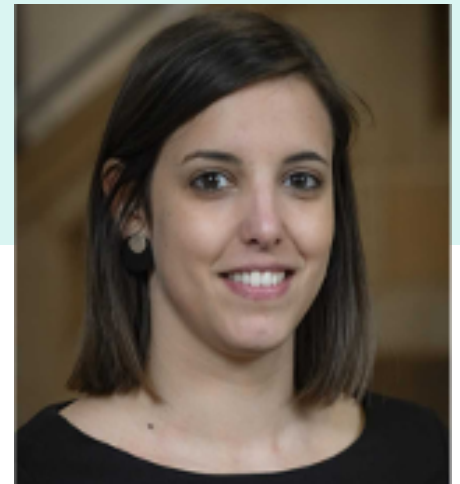
KEYNOTES

Dr Lore Mergaerts

Title of presentation: Suspect vulnerability in the eyes of the EU and ECtHR: an examination in light of legal psychological and criminological research

Dr Lore Mergaerts obtained her PhD in Criminology at KU Leuven in 2021. Her research project was funded by the Research Fund – Flanders (FWO) and concerns vulnerable suspects in criminal proceedings. She currently predominantly conducts research and publishes on suspect vulnerability in criminal proceedings and police questioning in general from a domestic Belgian and European perspective.

Her main interests are the conceptualization and identification of vulnerability, police questioning practices, and the implementation of procedural safeguards throughout criminal proceedings, also focusing on the interplay between law and psychology. Her research builds on theoretical analyses as well as comparative and empirical insights.



KEYNOTES

Dr Julie Gawrylowicz

Title of presentation: Vulnerable and inebriated witnesses: The impact of alcohol on eyewitness memory recall

Dr Julie Gawrylowicz is a lecturer in Psychology interested in memory in applied settings. Her research concerns how our memory is working and what factors might negatively or positively impact our memory recall. She applies this knowledge to forensic settings, such as the reliability of eyewitnesses and police investigative interviews. Her recent line of research explores how alcohol influences memory, discovering that alcohol can protect memory in certain situations.

Intoxicated witnesses and victims are overrepresented in the Criminal Justice System, however, negative attitudes towards them might prevent access to a fair investigation and a subsequently fair trial. This talk will provide an overview of recent research, which suggests that intoxicated witnesses might be better than their reputation. The following variables and their impact on the reliability of intoxicated witnesses will be scrutinised: alcohol dosage, interview timing, and co-witness discussion. Finally, some applied recommendations and future research suggestions will be provided.



STUDENT/ EARLY CAREER PRESENTATIONS

Linnea Koponen: Interpreters' views and experiences of interpreter-mediated child forensic interviews

Linnea Koponen, a master's student in psychology at the University of Gothenburg, is currently working in a research project on interpreter-mediated child forensic interviews. She is interested in research on vulnerable children and, more specifically, how child victims and witnesses are being treated by the legal system.



Charlotte Löfgren: Swedish courts' evaluations of interpreter-mediated child investigative interviews

Charlotte Löfgren is a masters student based in Sweden. Her research interests are in legal psychology, especially concerning children in the legal area, child interviewing, credibility-, and reliability assessments. Her master thesis explored the Child Protective Services experiences interviewing children in cases of suspected child sexual abuse.



STUDENT/ EARLY CAREER PRESENTATIONS

Elsa Gewehr

Elsa Gewehr is a research associate at the department for legal psychology at the Psychologische Hochschule Berlin, and at the department for psychological diagnostics at the University of Kassel. Her current research focuses on child sexual abuse interviews and differential aspects of suggestibility. She also works as an expert witness for credibility assessment in criminal court cases.



Anett Tamm

Dipl.-Psych. Anett Tamm is a research associate in the department of legal psychology at the Psychologische Hochschule Berlin and an expert witness with a focus on credibility assessment. She is currently working on the development of a feedback-driven virtual reality training for initial interviews in cases of suspected sexual abuse. She is particularly interested in supportive interviewing.



Title of presentation: ViContact. An interactive Workshop and Virtual Reality Training for Talking to Children about Suspected Sexual Abuse in School

Elsa Gewehr and Anett Tamm will present a new training program for child sexual abuse interviews in school settings, where teachers can practice their conversational skills by interviewing virtual children in an interactive virtual reality scenario.

STUDENT/ EARLY CAREER PRESENTATIONS

Chloe Macdonald: Exploring Vulnerability at Police Custody - The Perceptions and Interventions of Appropriate Adults and Police Officers

Chloe Macdonald is a MSc Student at Canterbury Christ Church University in Kent, England. She also works full time, running her local Appropriate Adult scheme. From September, she will be starting a MSc in Social Science Research Methods at Cardiff University, after which she plans to complete a PhD in Law; researching vulnerability and the Appropriate Adult safeguard. Her research explores how appropriate adults make interventions (or fail to) during processes at custody whilst supporting vulnerable suspects. The research also examines police / custody staff's understanding of the role of the AA and whether they negatively impact on AA interventions.



ROUNDTABLE COMMENTATORS

Prof. Penny Cooper

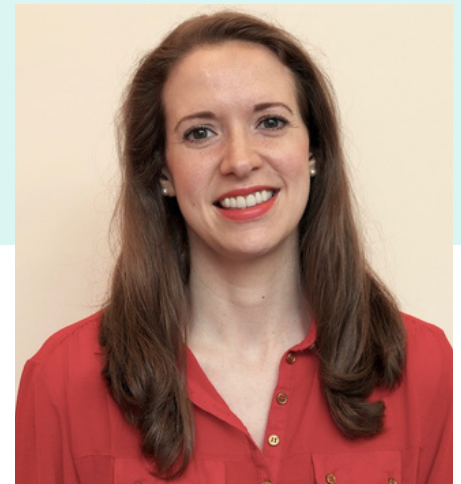
Prof. Penny Cooper is an academic and former practising barrister. She was called to the Bar in 1990 and for the first ten years mainly worked on child abuse cases. Her PhD focused on the cross-examination of vulnerable witnesses. She is the pioneer of witness intermediary training in England & Wales, Northern Ireland, New South Wales, Chile and the Australian Capital Territory. She co-founded The Advocate's Gateway to improve the questioning of vulnerable witnesses.



Prof. Cooper and colleagues at the Institute of Crime and Justice Policy Research (University of London) have just completed a three-year AHRC-funded project looking at communication, participation and values in respect of vulnerable adults in the Court of Protection. She is currently working with colleagues on the largest project to date reviewing policy, practice and user experiences of Coroners Courts.

ROUNDTABLE COMMENTATORS

Dr Michelle Mattison



Dr Michelle Mattison is a Chartered Psychologist and Chartered Scientist with the British Psychological Society. She holds the roles of Visiting Professor at the University of Chester (UK), Honorary Reader at the University of Salford, Honorary Researcher at St Mary's Sexual Assault Referral Centre (Manchester) and Associate Researcher with Greater Manchester Police. Her research focuses upon vulnerability in criminal justice settings, specifically regarding gathering and testing evidence.

Outside of academia, Dr Mattison works in forensic practice as a Registered Intermediary with the Ministry of Justice and National Crime Agency. This role involves facilitating communication with vulnerable victims and witnesses during live police investigations and during criminal trial proceedings. Michelle has worked on a range of cases concerning offences such as harassment, robbery, child sexual exploitation, physical abuse and neglect, sexual assault, rape, and murder. She works with typically developing children, and also with children and adults who have complex communication needs such as autism and learning disability.